

PSIKİYATRİ - PSİKOLOJİ
NÖROLOJİ - DAHİLİYE
ÇOCUK SAĞLIĞI

HP HUMANİTE TIP MERKEZİ
PSİKİYATRİ Prof. Dr. Sedat Özkan

HUMANİTE TIP MERKEZİ
GÜN HASTANESİ

HP

HUMANİTE
PSYCHIATRIC

MEDICAL CENTER

THE INTEGRITY
OF BODY - BRAIN - MIND

DAY HOSPITAL MODEL

Esentepe Mah. Gazeteciler Sitesi Matbuat Sokak
No: 25 Esentepe / Şişli / İstanbul

T 0212 274 04 44 - 274 78 78 F 0212 274 63 15

www.humanitepsikiyatri.com

SCIENTIFIC ADDRESS
TO PSYCHIATRY



Humanite
Psikiyatri

www.humanitepsikiyatri.com

HP

HUMANITE
PSYCHIATRIC

MEDICAL CENTER

Psychiatry, Children Psychiatry, Psychology,
Internal Medicine, Neurology, Children Health

The Integrity of Body- Brain- Mind
DAY HOSPITAL MODEL

CLINICAL SERVICES PROVIDED BY OUR POST-GRADUATE ACADEMIC TEAM

| | | |
|--|--|--|
| Psychotherapy (Medical Psychotherapy, Family And Relationship Therapy, Cognitive Behavioral Therapy, Group Therapies) | Consultation Liaison Psychiatry (Psychiatry of Surgery, Neurology, Cardiology, Obstetrics and Gynecology, Internal Medicine, Dermatology, Physical Therapy and Rehabilitation, etc.) | Psychosomatic Medicine (Stress, Physical Disorder Due To Psychological Stress, Pain Disorders) |
| Internal Medicine & Biochemical Laboratory | Clinical Psychiatry (Mood Disorders, Anxiety, OCD, Psychotic Disorders, Depression, Personality Disorder, etc.) | Neurology Psychology, Neuropsychology Laboratories |
| Daily Hospitalization & Day Hospital Model | Cancer Psychiatry (Psycho-oncology) | Post- graduate Training and Courses (Course, Internship, Supervision) |
| Alcohol, Substance, Internet Addiction & Addiction Consulting | Psychiatric Rehabilitation & Art Therapy | Psyche Life Seminars |
| Child And Adolescent Psychiatry | Emergency Psychiatry | EEG |
| Trauma Unit | TMS | Geriatric Psychiatry |
| Sexual Dysfunctional Therapy Unit | EMDR | Psycho-diet |



CLINIC LINE
0212 274 78 78

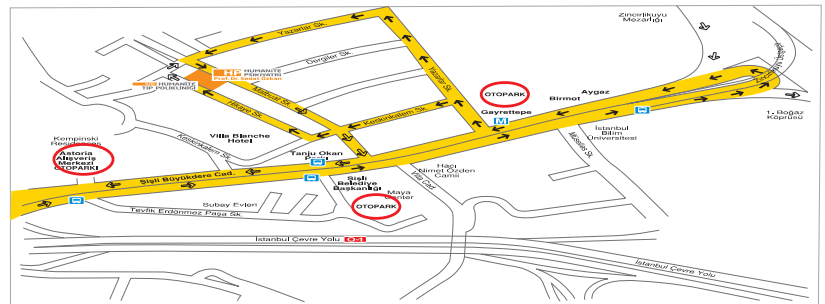


COORDINATOR LINE
0532 734 68 06



EMERGENCY
EXPERT LINE
0544 542 43 69

Esentepe Mh. Gazeteciler Sitesi Matbuat Sokak No:25
Esentepe – Şişli – İstanbul Telefon: 0212 274 78 78



Humanite Psychiatry and Medical Center is a scientific service project.

Our institute presents a new model in psychiatry and psychology and health system in our country. This project is a product of mission and vision based on experience decaden of years and molded with spirit of devotion.

HUMANITE PSYCHIATRY MEDICAL CENTER is an institution serving in Clinical psychiatry, Child and adolescent psychiatry, liaison psychiatry and psychosomatic medicine, psycho-oncology, geriatric psychology, clinical psychology, Family, spouse and relationship therapy, sexual therapy, sign language with psychotherapy for deaf, internal medicine, neurology; psycho-diet, psychotherapy, psychoeducation. It is based on integrity of body-brain-mind. It provides integrity between psychiatry-internal medicine-neurology-psychotherapy and integrity of body-brain-mind.

It is an institution that applies day hospital model. **DAY HOSPITAL MODEL** is a new service in psychiatry, psychology, neurology, internal and psychiatric medicine. It provides optimum treatment by short-term concentrate observation and examination without necessity of admission or daily admission.

We provide the chance of daily observation and treatment by Day Hospital Model and reduce the necessity of admission. We have laboratories for biochemical examination, EEG, psychological and neuropsychological tests which are requirements for this service. We aim for a new body, a new ego, a new mind, new strategies of coping, new points of view and for our patients.

OUR INNOVATIONS;

-Day Hospital Model that reduces necessity of admission; provides all the services of treatment without disengaging psychiatry patients from their family and social relations.

-Day Hospital Model which reduces the need for hospitalization and provides concentrated daily observation and treatment.

-Short period observation and admission

-Opportunity of all psychiatric treatment and psychosocial support to patients who have medical, physical illness or have undergone operation or having cancer.

-Rehabilitation unit intended to help patients to regain their functional and productive roles in the community

-Education programmes



Humanite Medical Centre is committed to an universal, humane, ethical and scientific values of medicine.

Thus embraces all humanity in each and every person.



Our principle

is to approach people, health and diseases holistically, taking biologically, psychological, sociological, cultural aspects into account.

-We closely follow most recent developments and evolutions in the world of science.

-We provide high quality scientific standards.

-We adopt all ethical principles.

-We embrace science, love and trust as the highest “humanite” values.

-In service, it is essential to hold up and combine morality, humanitarian values, experience, holistic view and continuous education.

-Our clinic unifies the most innovative scientific developments in the world with our rich experience accumulated over the years.

- We regard the health of body and mind as an inseperabla unity.

- We deduct the practice of psychiatry from the narrow perspective, considering the differences between healing and medicating.

-Our commitment to patient is -by understanding their thoughts and feelings and managing uncertainty-to treat and care each patient as unique and valuable person.

- We stick up for the universal understanding of medicine and psychiatry; as an engaging process.



We commence a new application in psychiatry and psychology in our country health system;

“Day Hospital Model”





Our Innovations

As Humanite Psychiatry, we aim to popularize this practice which increases the possibility of success in treatment; therefore, decreasing the time spent and cost of staying in hospital.

The day hospital model in psychiatry is a breakthrough for our country. Our aim is to provide holistic psychological support to all our patients -without isolating them from their families and social activities- by presenting all offerings of inpatient treatment. This process ensures an opportunity of fast and close follow up and deep observation by providing an all day treatment if required.

HP**HUMANİTE
PSYCHIATRIC****MEDICAL CENTER**

The Integrity of Body- Brain- Mind



Individual Therapies

Daily Observation, Outpatient and Emergency

Psychiatric Intervention

Internal medicine

Bio Chemistry Laboratory

Clinical Psychiatry

Psycho-Diet Unit

Psychosomatic Pain Unit

Family, Spouse and Relationship Therapy

Sexual Dysfunctions Unit

Psychiatric follow-up to inpatients at home

Deaf Psychology- Psikotherapy

Mental Trauma Unit

Consultation Liaison Psychiatry

(Treatment of Psychiatric Problems
Caused by Physical Disorders)

Sleep Unit

Pisiko education

(Patients and relatives are educated about mental illnesses.)

Neurology

Child and Adolescent Psychiatrist

Group Therapies

Psychotherapy

Palliative Care

(Psychological Support for Cancer Patients)

Psychiatric Rehabilitation and Art Therapy

Cognitive Therapy

Medical Psikotherapy (Medical Patients)

TMS, EMDR

Continuing Education After Graduation

Psychiatry of age

Clinical Psychology

Dependency Treatment Unit

Psychiatric Counseling for Patients in Other

Harvesters

Treatment and Follow-up

EEG Laboratory E

Dynamic Therapy

Clinical Psychology and Neuropsychological,
Intelligence and Neurocognitive Testing Applications

HP HUMANİTE TIP MERKEZİ**Beden - Beyin - Ruh Bütünlüğü**

Esentepe Gazeteciler Sitesi Matbuat Sokak No: 25 Esentepe - Şişli - İstanbul

☎ 212 274 78 78

www.humanitepsikiyatri.com



Our Service Areas

- Clinical psychiatry
- Emergency psychiatric intervention
- Ward for internal medicine
- Neurology
- Child and adolescent psychiatry
- Geriatric psychiatry
- Psychiatric rehabilitation and art therapy
- Psycho-oncology (Psychological support for cancer patients)
- Clinical psychology
Clinical psychology and neuropsychology laboratories,
personality, intelligence and neurocognitive testing)
- TMS
- EMDR
- EEG laboratory
- Individual therapies
- Group therapies
- Medical psychotherapy (with medical patients)
- Psychosomatic pain unit
- Family, spouse and relationship therapy
- Sexual therapy
- Therapies on the treatment of addiction
- Psychic trauma unit
- Psycho-diet programmes
- Sleep disorder unit
- Therapies on sexual dysfunctions
- Psychoeducation (education given to the patient and the immediate family about the illness)
- Education after graduation
- Deaf psychology / psychotherapy
(impaired hearing psychology)
- Outpatient programmes with other hospitals and patient follow-up

Our Medical Working Staff

- Psychiatry experts
- Consultation liaison psychiatry experts
- Psychosomatic medical experts
- Neurology experts
- Internal diseases
- Child and adolescent psychiatry expert and expert psychologist
- Expert psychologists on psychotherapy
- Therapy for the hearing impaired
- Expert psychologists on family and relationship therapy
- Expert psychologist on psycho-diet
- Sexual therapy expert
- Psychologists expert in medical psychotherapy
- Expert consultant on addiction
- Nurses specialized in the field of psychiatry and social workers



Observation & Admissions Service

In this unit, we offer rooms that are provided with medical equipment and have a therapeutic environment. We can offer all types of diagnosis and treatment services that a hospital would be able to offer. Our service offers psychological and psychiatric intensive care (biological treatments and applied behaviour psychotherapy). In addition to this, we provide our patients with 24-hours observation, short-term stay and daily admission.

Outpatient follow-up and therapy unit (at home or at a hospital)

Psychiatric counseling and treatment follow-up unit for patients in Other hospitals





Clinical Psychiatry

- | | | | |
|---|--|--|---|
| <ul style="list-style-type: none"> • Schizophrenia and other Psychotic Disorders • Delusional Disorders • Mood Disorders <ol style="list-style-type: none"> 1-Depression 2-Bipolar disorder | <ul style="list-style-type: none"> • Anxiety Disorders <ol style="list-style-type: none"> 1-Panic disorder 2-Phobias 3-Obsessive compulsive disorder 4-Social phobia • Post-trauma Psychological Disorders • Developmental Disorder • Organic Brain Diseases • Sexual dysfunctions | <ul style="list-style-type: none"> • Pain Syndromes <ol style="list-style-type: none"> 1-Tension headaches 2-Physical complaints that are related to stress • Eating disorders <ol style="list-style-type: none"> 1-Blumia 2-Anorexia 3-Obesity | <ul style="list-style-type: none"> • Sleep Disorders • Impulse Control Disorders • Compliance Disorders • Communication problems within family and with social relationship |
|---|--|--|---|



Child & Adolescent Psychiatry Unit

This unit consists of child and adolescent psychiatry experts, and psychologists, pedagogues and speech therapists. Psychiatric and psychological treatment is provided for children and adolescents with;

- Behavior and adaptation disorders
- Attention deficiency and hyperactivity disorder
- Developmental issues
- Attention deficiency and hyperactivity disorder
- Developmental issues
- Anxiety, depression, social phobia
- Learning disability and course failure
- Examination stress
- Pervasive developmental disorder (Autism, Asperger's)
- Speech and communication disorders
- Dependency
- Tics and movement disorders
- Elimination disorders
- Dislocation disorders
- Psychiatric and psychological treatment is provided, for eating, sleeping, speech disorders
- Psychological support for children and adolescents with physical impairments (diabetes, leukemia, surgical intervention)
- Psychological support and treatment for divorce and parental loss victims
- In addition, studies are carried out in cooperation with the guidance services of primary schools.

PSYCHO-ONCOLOGY

**“Every cell has a mind,
If the mind sinks, the body collapses faster,
the body, brain, and soul as a whole are inseparable.”
SEDAT ÖZKAN M.D.**

Psycho-oncology is the upmost discipline concerning human existence which brings together medical psychiatry, psychology and humanities such as sociology and philosophy.

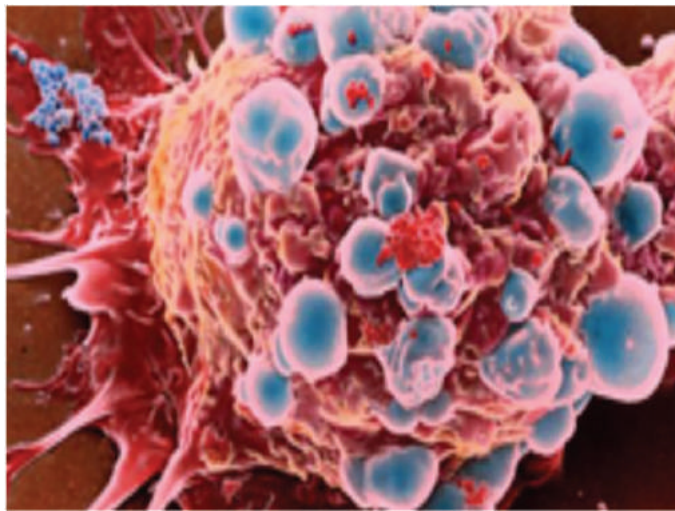
In general medicine, the most common psychiatric syndromes and psychological disorders appear with cancer.

The syndromes seen with cancer (e.g. depression), negatively effects the patient’s course of life, treatment response and prognosis as well as the patient’s adaptation and quality of life.

The patient’s psychological well-being can not be ignored when treating cancer.

Psychological treatment and support is an inextricable part of cancer treatment. If the soul sinks, the body collapses faster. The purpose is maturation after crisis and trauma.

We need to provide the individual with a new sprit, mind, ego, existence and life in line with the new body.



Consultation-Liaison Psychiatry & Psychosomatic Medicine Unit

It is the branch of science that provides those with physical illnesses and surgical intervention with psychiatric and psychosocial support. It is the psychiatry of all medicine. Interdisciplinary service is provided with a multidisciplinary team specialized in the field.

- Psychosomatic disorders (physical disorders with mental etiopathology)
- Psychiatric treatment and psychosocial support for those with chronic and internal diseases (diabetes, asthma, COPD, hypertension, M.S., dialysis patients, endocrine diseases etc.)
- Psychiatric treatment for cardiac diseases and after coronary bypass surgery. Stress elevation for maintenance of cardiovascular health (psycho-cardiology)
- Psychiatric support before and after surgical intervention (psycho-surgery)
- Psychological treatment for organ loss
- Psychological treatment and support pregnancy and birth, psychological support after the onset of menopause
- Pain psychiatry
- Psychiatric treatment and psychosocial support for those with neurological diseases
- Psychological support for patients undergoing physiotherapy and rehabilitation
- Psychiatric treatment for gastrointestinal disorders
- Psychiatric treatment for skin diseases

Psycho-oncology Unit

The treatment of psychiatric profiles that develop with cancer and its treatment, the provision of psychological support for the patient and their family.

Medical psychotherapy and psychoeducation is provided by a specialized team in psychology.



Addiction Unit (Alcohol-drug abuse, Internet addiction, Smoking, Gambling and relationship etc.)

Intra-day observation, holistic treatment and addiction counseling is provided.

Psychological Trauma Unit

Sexual Dysfunctions and Disorders Unit

Aging Psychiatric Unit

Psychiatry, neurology and internal diseases specialists provide service in coordination.

Psycho-diet Unit

The body deals with the origin of the brain eating behavior and psychology as a whole

Psychotherapy Unit

• Individual Psychotherapy

- Cognitive Psychotherapy Unit
- Crisis Intervention Psychotherapy
- Supportive Therapies
- Dynamic Psychotherapy
- Medical Psychotherapy
- Specialized psychotherapy for medical and surgical intervention patients (cancer, organ loss, cardiac diseases, menopause, chronic pain, M.S., diabetes etc.)
- Sexual Therapy
- Addiction Therapy

• Group Psychotherapy

- Chronic medical disease patients, cancer patients and post-surgery patients
- Psychosis group
- Neurosis group
- Developing and applying stress elevation techniques

• Home and relation psychotherapy



- **TMS Treatment**

(Trans cranial Magnetic Stimulation)

An FDA-approved medical technology that stimulates neurons in the brain with magnetics used for psychiatric and neurological diseases.

- **EMDR Treatment**

Eye-movement desensitization and reprocessing (EMDR) is a psychotherapy applied without medication or hypnosis. It is especially effective in perception.

- **Laboratories**

- Biochemistry
- EEG lab
- MOXO test
- Rorschach test
- MMPI test
- Neuropsychological battery
- Intelligence test



Psychology and Neuropsychology Laboratory



Personality Tests

Rorschach is the MR and biopsy of the mind.

With its long history the test has a worldwide use for psychiatric diagnosis, as well as for understanding the unconscious processes underlying the individual's personality.

MMPI has the power to reveal the personality of the individual's personality using objective and scientific criteria.

TAT is a projective test that informs us about the individual's thoughts, feelings, behavior, and motivations; allows commentary on the individual's family and interpersonal relations.

Neuropsychological Tests

The NPT battery provides important contribution to the diagnosis of dementia types, depression, attention and learning disorders, and different neuropsychological disorders.

Intelligence Tests

"WAIS is used to measure the mental abilities of individuals aged 16 and over.

"The WISC-R consists of a test that assesses the skills of children in different areas. The WAIS-III provides detailed information about the individual's strengths and mental abilities that need to be improved."

Child Evaluation Tests

Gesell development figures, Metropolitan school maturity test, Frostig developmental visual perception, Ankara development scanning inventory, Bender gestalt visual motor perception, Peabody picture vocabulary test, Porteus labyrinths test.

SCID

A semi-structured interview for evaluation of psychiatric adaptation disorders (personality disorders). The interview aims to determine whether the individual has issues in interpersonal relations or not. Furthermore, many sub-threshold personality traits are discovered.

"Inventory and inventory"

"Diagnosis of scales in psychiatry, classification and"
This scale evaluates the processes of individuals in different situations or between individuals.

Psyche Life Seminars

In our center we implement free psyche-life seminars.

Psychoeducation Unit

We serve psycho-education to patients and to their relatives. The education includes psychiatry, liaison psychiatry, psychosomatic medicine, child and adolescent psychiatry; psycho-oncology, addiction psychiatry, sexual dysfunction, family and relationship science. Furthermore, we have training programs to support personal development. We aim to understand the illness and patient very profoundly; it is our mission later on to help the patient to maintain his life during the treatment. Furthermore, continuing education is

Rehabilitation Service

It is a new initiative for our country. Without isolating our patients from family and community relations; we provide total diagnosis and treatment possibilities of inpatient treatment, and total psychological support in the therapeutic environment. We provide day observation support and treatment. Rehabilitation and socialization are provided under the supervision of specialists in the multidimensional and active treatment environment, besides biological treatments.



The Post-graduation Education and Courses

In our medical center, doctors, nurses, psychologists, and other professional health colleagues frequently participate in education programs.

These education programs are as follows;

- Consultation liaison psychiatry and psychosomatic medical education
- Psycho-oncology education
- Medical psychotherapy education
- Psychological test trends
- Addiction therapy trainings



Humanity Psychiatry Center Provides an Internship Program

(24 hours of theory education-60 hours of practical education)

We express our decades of experiences to our young interns.
Prof.Dr. Sedat ÖZKAN

Humanite Psychiatry Center brought out innovations and new implementations to our country. In fact, we aim to express our professional scientific experiences and traditional clinic knowledge to our eager colleagues.

Turkey's respected and esteemed psychiatrists, consultation liaison psychiatrists, psychosomatic medical specialists, psycho-oncology experts, children and teenager psychiatrists, doctor psychologists, neurology specialists, doctor nurses and diet specialists will help you practice theory in scientific framework.

Our main objective is providing scientific equipment to the interns who are eager to be a psychologists or psychiatrist; furthermore, lecturing them on how to learn scientific treatments.

During The Internship;

-With the permission of the patients

- You will be allowed to attend to the meetings as a observer. Our psychiatrists and psychologists will manage the meetings. Furthermore, you will be frequently attend to the case meetings, consultations as an observer and visit meetings.

-24 hours theoretical education seminars will be provided by the specialists within our institution.

Anyone attending the program will receive supervision from Prof. Dr. Sedat OZKAN

You will gain theoretical background and practice in the framework of the internship program, and you will receive the following trainings by our specialists;

- Clinic interview techniques
- Psychiatric interview
- Planning your professional future in psychology
- Alcohol substance dependence
- Anxiety disorders
- Mood disorders
- Schizophrenia
- Consultation of liaison psychiatry and psychosomatic medicine
- Psychiatry of gynecological diseases and birth psychiatry
- Psychooncology
- Child and adolescent psychiatry
- Neuropsychological intelligence and personality tests
- Psychiatry of internal medicine
- Cognitive approach to eating disorders
- Cognitive behavioral therapy
- Obsessive compulsive disorder
- CBT in medical patients
- Sexual dysfunctions
- Family and couple dynamics
- Psychopharmacology
- Psychological trauma
- Cognitive analytic therapy
- Psychosis
- Psychodrama
- Psychological treatments in a liaison psychiatry
- Film analysis

Participants Terms:

Those who are currently studying in undergraduate or graduate departments of medicine, nursery, psychology, guidance and psychological consultation. “**Participation Document**” will be provided to those who complete their internship program at Humanite Psychiatry Center.



**KEEP YOUR
MIND FREE**

HP HUMANİTE PSIKİYATRİ TIP MERKEZİ
Beden - Beyin - Ruh Bütünlüğü

Esentepe Gazeteciler Sitesi Marbut Sokak No: 25 Esentepe - Şişli - İstanbul
☎ 212 274 78 78

www.humanitepsikiyatri.com



**The fight against cancer
is a mutual fight of the body,
brain and the mind. Let's work
this fight out together**

HP HUMANİTE PSIKİYATRİ TIP MERKEZİ
Beden - Beyin - Ruh Bütünlüğü

Esentepe Gazeteciler Sitesi Marbut Sokak No: 25 Esentepe - Şişli - İstanbul
☎ 212 274 78 78

www.humanitepsikiyatri.com



THE DAY HOSPITAL MODEL;
reducing the need for
hospitalization and
providing concentrated
daily observation and treatment.

HP HUMANİTE PSIKİYATRİ TIP MERKEZİ
Beden - Beyin - Ruh Bütünlüğü

Esentepe Gazeteciler Sitesi Marbut Sokak No: 25 Esentepe - Şişli - İstanbul
☎ 212 274 78 78

www.humanitepsikiyatri.com



**“Each cell has a soul; therefore,
do not poison them. Free
yourself
from your addiction.**

HP HUMANİTE PSIKİYATRİ TIP MERKEZİ
Beden - Beyin - Ruh Bütünlüğü

Esentepe Gazeteciler Sitesi Marbut Sokak No: 25 Esentepe - Şişli - İstanbul
☎ 212 274 78 78

www.humanitepsikiyatri.com



HUMANITY MEDICAL CENTER

Özel Psikosomatik Tıp Sağlık Yat. Dan. İç ve Dış Tic. Ltd. Şti.

Esentepe Mah. Gazeteciler Sitesi Matbuat Sokak
No: 25 Esentepe / Şişli / İstanbul

T 0212 274 04 44 - 274 78 78

F 0212 274 63 15

www.humanitepsikiyatri.com